



MOTSENG

INVESTMENT HOLDINGS

JULY 2025

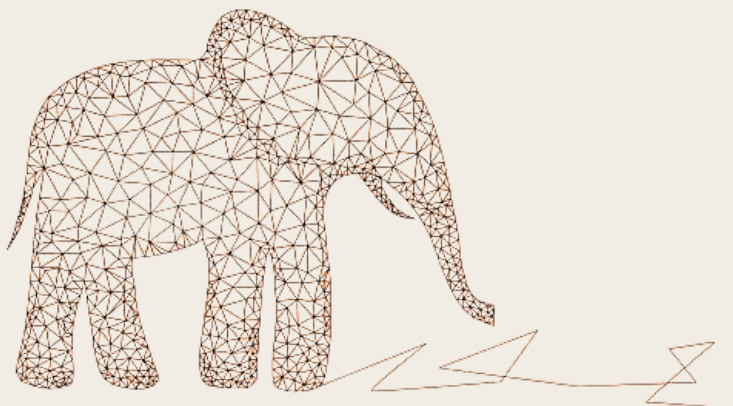
A black and white photograph of an elephant standing on a sandy beach, facing the camera. The elephant's trunk is lowered, and its large ears are spread out. The background shows a calm ocean under a dramatic, cloudy sky at sunset or sunrise. The text "legacy in motion." is superimposed over the elephant's body in a white, elegant script font.

legacy in motion.

Every great journey begins with quiet strength.

Akin to the elephant, Motseng leads with presence, wisdom, and intention. It reflects how we build; steady, smart, and sustainably, where each step we take, carves out a legacy of growth, resilience, and meaning.

Like the elephant, we are designed for endurance (**Sustainability**), evolved for adaptation (**Innovation**), and we act with precision (**Smart Solutions**).



Sustainability. Innovation. Smart Solutions.

WELCOME TO MOTSENG.

contents.

BUILDING IMPACT

OUR FOOTPRINT

OUR JOURNEY

INDUSTRY AWARDS

GROUP STRUCTURE

OUR PHILOSOPHY

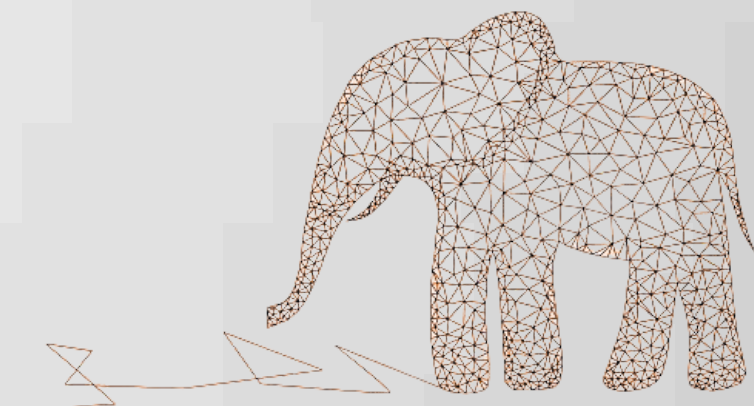
EXECUTIVE TEAM

ESG

OUR SOLUTIONS

CLIENT PORTFOLIO

CORPORATE SOCIAL INVESTMENT



building impact.



Established in 1998, Motseng Investment Holdings ('Motseng') has grown into a forward-thinking, multi-faceted organisation driven by purpose and progress. As a black-owned, diversified investment holding company, Motseng operates across the property value chain through its investment and services boutiques, and holds strategic interests in development, concessions, project and facilities management.



Motseng is actively shaping the future through impactful Public-Private Partnerships (PPPs), a firm commitment to transformation, and a values-led approach anchored in ESG principles.



With its roots in Johannesburg, South Africa, Motseng continues to expand its footprint across Southern Africa, with active representation in Mauritius, Mozambique and Lesotho.

our footprint.



Motseng's growing footprint spans strategic economic zones, allowing us to operate where infrastructure, innovation, and development intersect. Our presence in high-growth regions supports the delivery of tailored, sustainable solutions across diverse sectors. By leveraging local partnerships and regional insights, we ensure that our impact is both scalable and relevant, thus driving inclusive growth and long-term value creation throughout the SADC region.



our journey.

1

THE BOLD BEGINNING

Where vision met courage.

- 1998 – Established Motseng Marriott Property Services which signals the start of long term property industry impact.
- 2000 – Motseng becomes BEE partner to Enforce Security Group.
- 2002 – Strategic JV with Marriott signals the start of long-term property industry impact.
- 2005 – Motseng buys out Marriott to fully own Motseng Property Services.
- 2005 – Motseng concludes a BEE transaction with KAP International.

2

POWER MOVES IN PARTNERSHIP

Scaling through collaboration.

- 2009 – Secures largest BEE equity stake in Imbumba Aganang SPV.
- 2009 – Acquires Trennplast Furniture, growing industrial presence.
- 2010 – Strengthens position in Debis Fleet Management via BBEE collaboration.
- 2012 – Delta Property Fund listed on JSE, a moment of capital markets confidence.

3

PAN-AFRICAN VISION

Crossing borders, breaking boundaries.

- 2012 – Motseng acquires Selmec & Unimedia Mozambique.
- 2014 – Broadening of operations across property, infrastructure, and facilities.
- 2015 – Motseng Selmec opens an office in Lesotho.

4

INNOVATION & IMPACT

Pioneering, mentoring, transforming.

- 2019 – Launch of PropreneurX Accelerator to empower high-impact entrepreneurs.
- 2020 – Acquisition of Mott McDonald Engineering, deepening technical capabilities.
- 2021 – Continued focus on sustainability, digital transformation, and enterprise development.

5

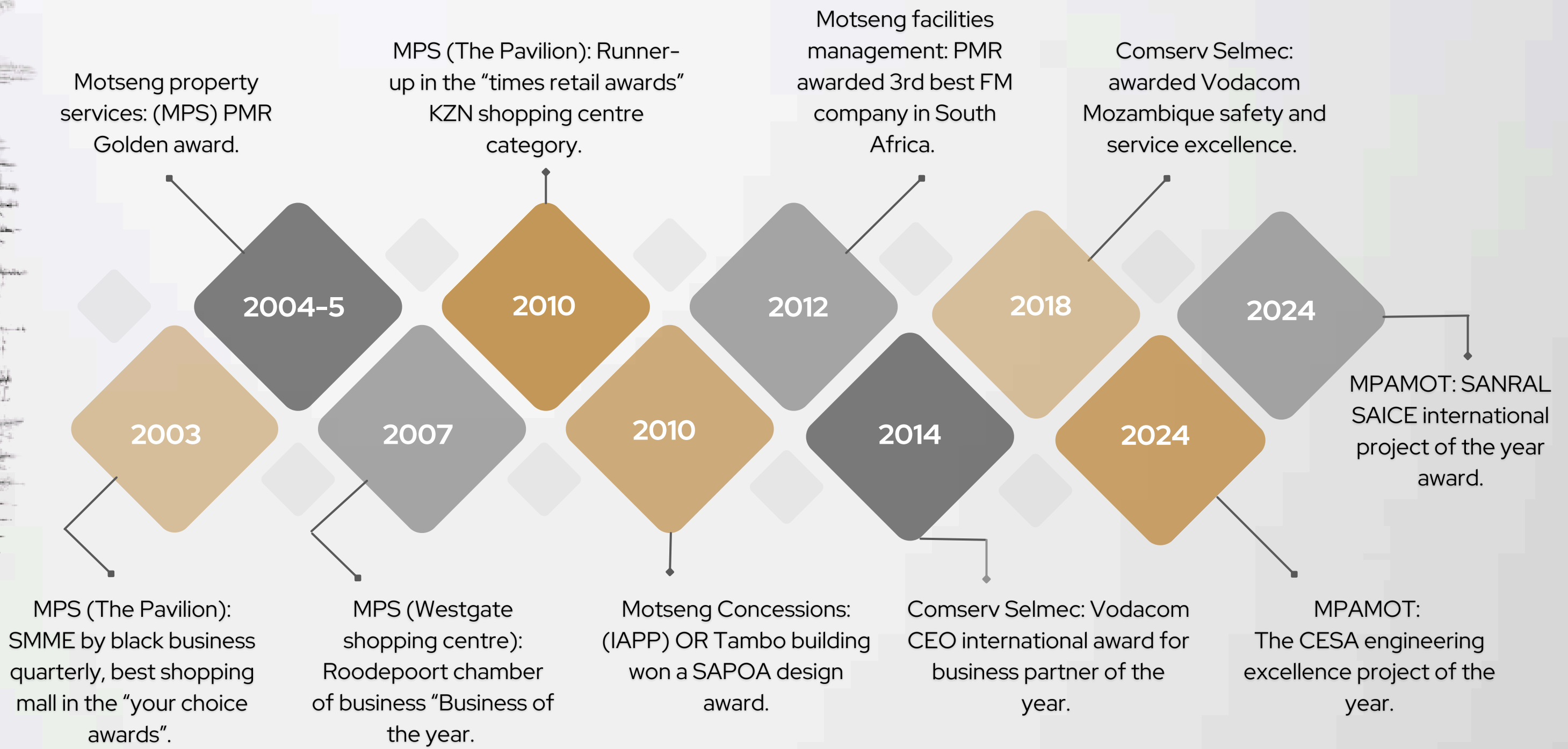
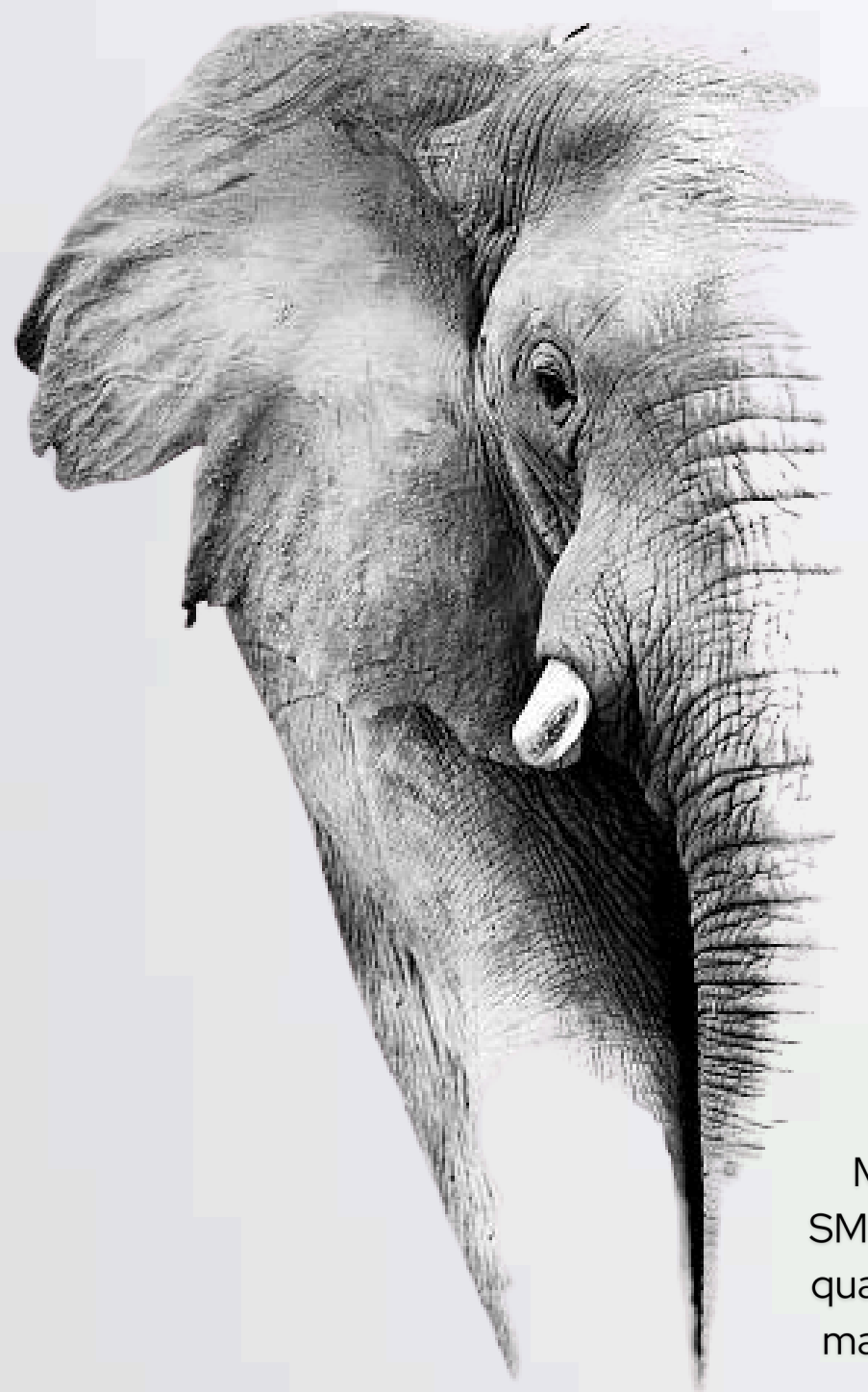
FUTURE FORWARD

Unlocking opportunity.

- 2023 – Motseng celebrates silver jubilee.
- 2025 – Merger of Motseng PPP and Ideas Fund PPP to establish Motseng Ideas Infrastructure Group

Over the years, Motseng has moved with intention, nurturing partnerships, shaping spaces and empowering people. From bold beginnings to borderless thinking, our journey has been defined by reinvention, resilience, and results.

industry awards.

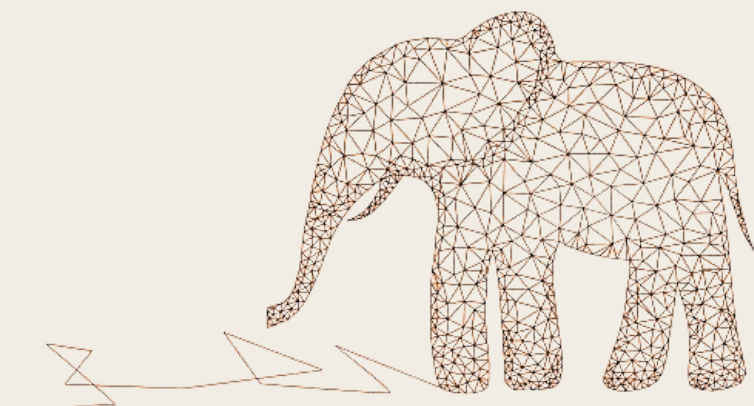
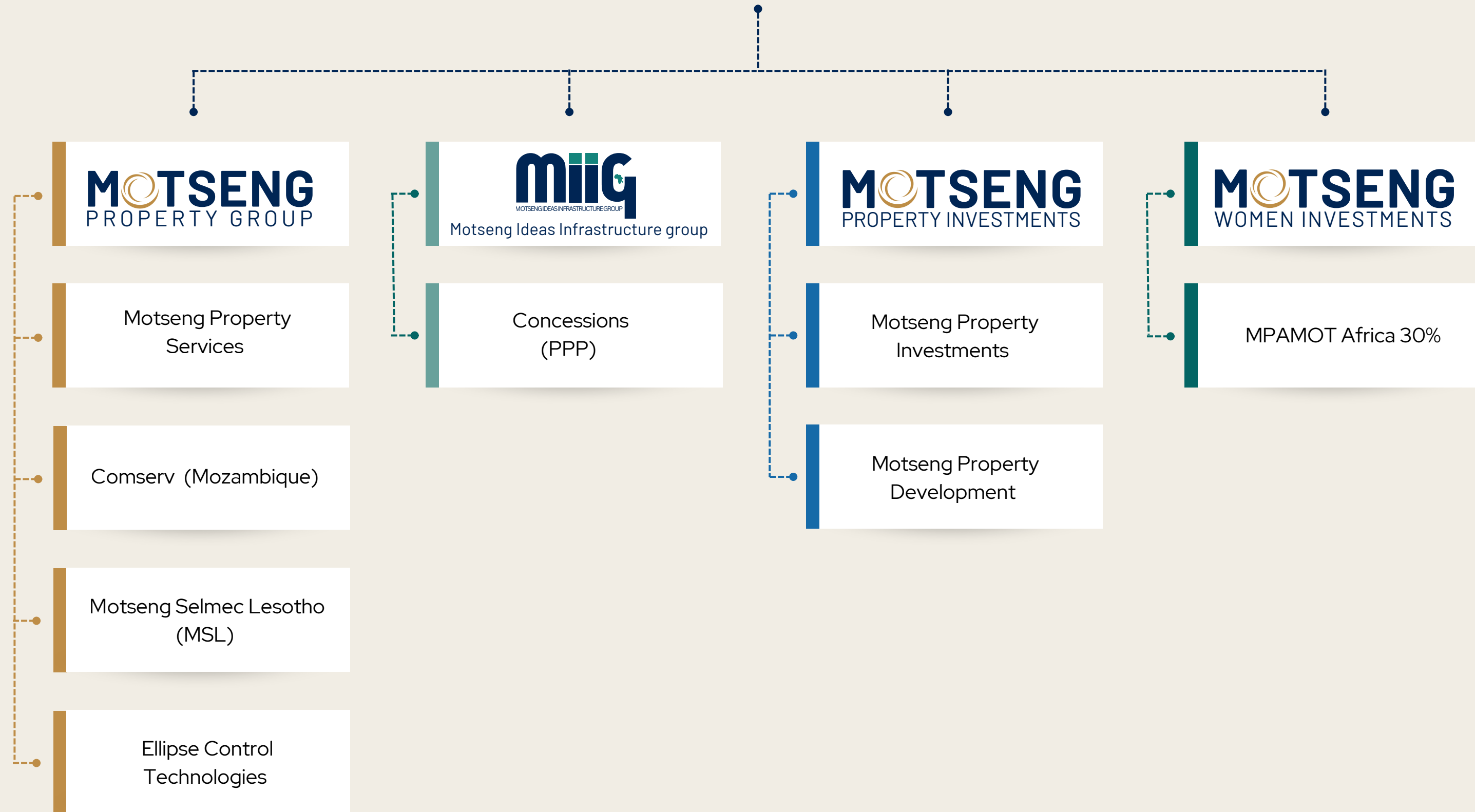




our group structure.

MOTSENG

INVESTMENT HOLDINGS



our philosophy.



VISION

To be the premier infrastructure investment group in Southern Africa with a universal reputation for our investment acumen and industry professionalism.

MISSION

To cultivate entrepreneurial growth, foster empowered management at operational level and ensure positive advancement and stability for our shareholders and staff.





Proudly women-led.

SINCE 1998

At Motseng we are all about inspiring those in our sphere of influence, to transition to renewable energy, our vision is to be in the forefront of sustainable business and to become industry leaders in creating smart solutions.



Ipeleng Mkhari
Group CEO



Ivan Tsuru
Group Finance Director



Mamase Ndamse
Group HR Executive



Nandi Trindad
MD: Concessions



Bongiwé Pityi
CEO: MIIG



Luis Brazuna
MD: Comserv Mozambique



Moteane Letsie
Country Manager: Lesotho

executive team.



ESG

ENVIRONMENTAL, SOCIAL, AND GOVERNANCE

The elephant thrives by nurturing the ecosystem around it, steady and grounded. At Motseng, our ESG commitment follows the same path: lead with presence, uplift with purpose, and leave behind lasting prosperity.

The focus on ESG is high on our sustainability agenda, especially where renewable energy and infrastructure rebuilding can be used to actively address social inequalities such as housing, safety, food security and livelihoods as well.

Motseng is committed to strong Environmental, Social, and Governance (ESG) principles, and guided by a purpose-driven leadership team, we embed these best practices into our operations to create lasting value for stakeholders. We prioritise ethical leadership, transparency, and accountability, by ensuring strategic oversight and responsible decision-making that drives long-term sustainability.

Our governance framework strengthens our commitment to environmental stewardship, social impact, sound corporate governance, and includes a secure employee whistleblower policy that promotes accountability.

As a member of the UN WEP family, our goal is to continue to engender a wider sense of stewardship for the natural environment, with all our stakeholders and community around us.



According to the UN Environmental Programme, the property sector currently contributes 30% of global annual greenhouse emissions (GHG) and consumes around 40% of the world's energy.





our solutions overview.

our strategic focus.

Motseng has evolved from its property-focused roots into a diversified infrastructure and investment leader in South Africa and the SADC region.

Strategic shift

While our foundation lies in the built environment, our purpose lies in creating assets that uplift, empower, and endure.

Purpose-driven development

From bricks to bold ideas

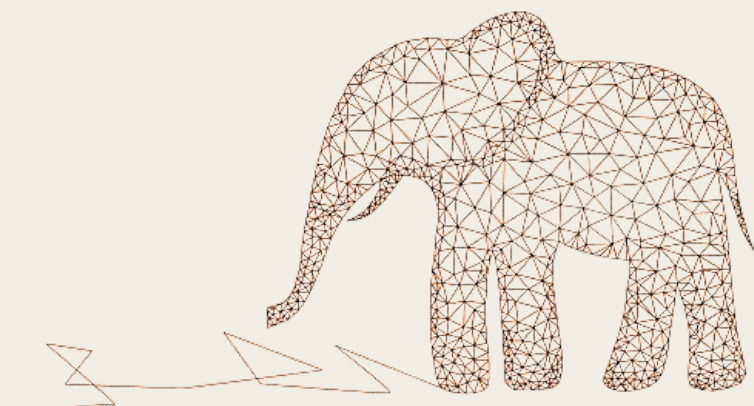


Our strategy isn't just about growth, it's about shaping the future through alternative investments and an embedded culture of innovation.

Rooted in legacy



We embrace digital transformation and ESG principles to deliver smart, sustainable solutions for communities and clients alike.



We deliver integrated solutions and impact-driven growth through innovation, partnership, and transformation.





Clients & Affiliations.

Our commitment to excellence, efficiency, and innovation has earned us the trust of leading organisations across Southern Africa. Motseng serves a diverse client base across the public and private sectors, delivering tailored solutions in property, telecommunications, infrastructure, and asset management. Our clients include government institutions, multinational corporations, telecom operators, real estate investors, and industrial enterprises.



international relations
& cooperation

Department:
International Relations and Cooperation
REPUBLIC OF SOUTH AFRICA

we are one
**Sibanye
Stillwater**



public works

Department:
Public Works
REPUBLIC OF SOUTH AFRICA



GOLD FIELDS



vodacom



**Murray
& Roberts**

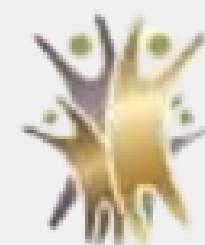


**MASS
DISCOUNTERS**
COME DION WIRE

sefa
Small Enterprise Finance Agency



GAUTENG
PROVINCIAL GOVERNMENT
REPUBLIC OF SOUTH AFRICA



LEDA
LIMPPOPO ECONOMIC
DEVELOPMENT AGENCY
AN AGENCY OF THE LIMPOPO
PROVINCIAL GOVERNMENT
REPUBLIC OF SOUTH AFRICA

ROOTED IN THE FUTURE

Honeywell



CSI

CORPORATE SOCIAL INVESTMENT

The Motseng family shares a common purpose - to deliver lasting commercial, social and environmental benefit. As such, Motseng's ESG principles are heavily aligned to its Corporate Social Investment (CSI) contributions and is proactively involved in advancing the education of previously disadvantaged individuals, especially women.



COMMUNITY

With a strong education ethos, Motseng proactively provides graduates with the opportunity of adding real-time experience to their CVs, through its internship programme. In addition, Motseng's Vac @Work programme launched in 2018 has introduced young black school learners to a typical work environment.



WOMEN IN ARTS AND CULTURE

We've proudly sponsored the Women in Opera gala concert for four consecutive years (2016–2019). As a pioneering Black woman-owned and led organisation, we believe South African Black women in this genre have been overlooked – and we aim to celebrate their globally recognised excellence, passion, and talent.



PROPreneurX ACCELERATOR

Motsengs' flagship initiative is PROPreneurX – a Property Entrepreneur Accelerator programme aimed at capacitating propreneurs. As part of supporting the transformation imperatives of South Africa, this programme aims to empower, enable, support and grow new and upcoming commercial property practitioners.



CHAMPIONING INCLUSION

Our commitment to dignity and equity drives us to actively support people living with disabilities; not out of charity, but because their value is undeniable. We back initiatives that, challenge bias, and build spaces where ability is defined by potential, not limitation.

contact us.

✉ marketing@motseng.co.za

🌐 www.motseng.co.za

☎ +27 11 267 8000